

<i>Telamona fasciata</i>	No. 685.	<i>Telamona unicolor.</i>
<i>Telamona concava</i>	No. 686.	
<i>Telamona fagi</i>	No. 687,	<i>Heliria scalaris</i> Fairm.
<i>Telamona tristis</i>	No. 689.	
<i>Telamona coryli</i>	No. 690,	<i>Telamona tristis.</i>
<i>Telamona querci</i>	No. 691.	
<i>Telamona reclinata</i>	No. 693.	
<i>Thelia cratægi</i>	No. 697,	<i>Glossonotus cratægi.</i>
<i>Tragopa dorsalis</i>	No. 698,	<i>Micrutalis dorsalis.</i>
<i>Uroxiphus caryæ</i>	No. 700,	<i>Microcentrus caryæ.</i>
<i>Entilia sinuata torva</i> subsp.	No. 647,	<i>Entylia sinuata</i> Fabr.

IN U. S. NATIONAL MUSEUM.

<i>Ceresa taurina</i>	No. 3668.
<i>Ceresa brevicornis</i>	No. 1875.

SOME NEUROPTERA FROM THE UNITED STATES.

BY REV. FATHER LONGINOS NAVÁS, S.J.,
Zaragoza, Spain.

All the Neuroptera here recorded were sent to me by my friend, Mr. J. R. de la Torre-Bueno, White Plains, N. Y.

Family LIBELLULIDÆ.

1. *Libellula lydia* Drury. White Plains, N. Y.
2. *Libellula luctuosa* Burm. One male from Waban, Mass., near Boston.
3. *Libellula vibrans* Fab. var. *incesta* Hag. Waban. Two young examples.
4. *Celithemis eponina* Drury. Waban.
5. *Erythemis simplicicollis* Say. Waban.
6. *Nannothemis bella* Uhler. Yaphank, L. I., July 4, 1913.

Family ÆSCHNIDÆ.

7. *Gomphus exilis* Sel. Waban; Great Notch, N. J., May 30, 1906.

Family AGRIONIDÆ.

8. *Agrion maculatum* Beauv. Lakehurst, N. J., C. E. Olsen, July 4, 1909.
9. *Enallagma hageni* Walsh. Waban.

Family MYRMELEONIDÆ.

10. *Hesperoleon abdominalis* Say. Van Cortlandt Park, N. Y.,
Point Pleasant, N. J., July 26, 1905.

11. *Hesperoleon placidus* sp. nov. (Fig. 1.)

Similis blando Hag.

♂. Caput flavidum; facie linea longitudinali prope oculos et alia transversa pone antennas, fuscis, vertice tuberculis punctisque fuscis; oculis fuscis; palpis pallidis, apice fusciscentibus;

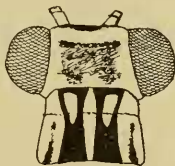


FIG. 1. *Hesperoleon placidus* ♂ Nav. Head and prothorax. (Col. m.)
antennis fortibus, sensim in clavam dilatatis, fuscis, apice articulorum anguste flavido, clava inferne flavida.

Prothorax latior quam longior, antrorsum leviter angustatus, inferne flavidus, superne flavidus, duplici fascia longitudinali centrali, in medio anteriore maculam elongatam liberante; striola param definita in medio posteriore inter fasciam et marginem lateralem, fuscis. Meso- et metanotum flava, 4 lineis longitudinalibus fuscis. Pectus flavum, fusco striatum, vel potius fuscum, flavo maculatum.

Abdomen dense pilosum, inferne fuscum, superne flavidum, linea longitudinali media angusta et alia laterali, fuscis; cercis cylindricis, apice obtusis, segmento precedenti longitudine aequalibus, fusco pilosis, testaceis, externe fuscis.

Alæ hyalinæ, acutæ, reticulatione subtota fusca, albido varia, stigmatate albido; area apicali serie venularum gradatarum instructa.

Ala anterior area apicali venulis gradatis partim in duas series positus, area radiali 4-5 venulis internis; sectore radii 9 ramis; stigmatate puncto fusco interno, atomo fusco ad rhexima et ad anastomosim rami obliqui cubiti; atomis minutis fuscis ad axillas furcularum marginalium; area postcubitali longa, basi biareolata.

Ala posterior impunctata; area radiali 3 venulis internis; sectore radii 10 ramis; area postcubitali longa, simplici.

Long. corp. ♂ 26 mm., al. ant. 22, post. 21, cerc. 2 mm.

Patria. Pt. Pleasant, N. J., July 25. Leg. Bueno. (Col. m.)

12. *Hesperoleon nivatensis*. sp. nov. (Fig. 2).

Similis *feroci* Walk. minor.

♂ caput facie testacea, fronte picea, nitida, superne pone antenas testacea, pilis griseis; vertice testaceo, linea transversa antica atra nitida et alia postica nigra, medio subinterrupta; oculis fuscis; palpis maxillaribus nigris, ad articulationes testaceis, labialibus paulo longioribus, testaceis, articulo ultimo fusiformi, inflato, piceo, apice acuminato, antennis fuscis, clava parum dilatata, inferne medio testacea, capiti ac thoraci longitudine subæquali.

Prothorax transversus, pilis brevibus, griseis, testaceus, linea longitudinali media in duas longitudinaliter divisa et alia laterali

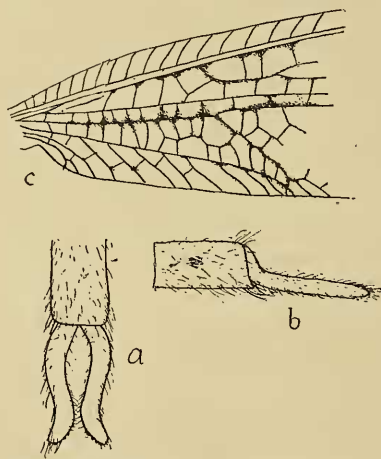


FIG. 2. *Hesperoleon nivatensis* ♂ Navas. *a*. End of abdomen, above. *b*. Same from side. *c*. Basal part of the forewing. (Col. m.)

inter ipsam et marginem lateralem fuscis. Meso- et metanotum testacea, fusco longitudinaliter striata. Pectus fuscum, testaceo lineatum.

Abdomen ala posteriore longius, fuscum, albido breviter pilosum, superne segmentis 3-5 linea laterali longitudinali testacea; cercis (Fig. 2, *a*, *b*) fortibus, ultimo segmento abdominis paulo longioribus, cylindricis, leviter arcuatis, in quarto apicali extror-

sum arcuatis, in parte interna hujus portionis denticulatis, externe totis longiter fusco pilosis, externe fuscis, interne testaceis.

Pedes testacei, apice tibiæ et articulorum tarsorum fusco, femoribus anticis superne, intermediis superne et inferne (lateraliter testaceis) posticis subtotis fuscis; tibiis posticis inferne fuscis; calcaribus testaceis, anterioribus duos primos tarsorum articulos haud æquantibus, posterioribus primum superantibus.

Alæ hyalinæ, subobtusæ, margine externo vix sub apicem concavo; stigmatibus pallido, interne fusco limitato; reticulatione subtota fusca, pallido modice varia, latius ad procubitum; area apicali lata, serie venularum gradatarum dotata; linea plicata anteriore distincta.

Ala anterior (Fig. 2, c) aliquot venulis ad insertionem in radium et cubitum fusco limbatis; item stria ante apicali et axillis furcularum marginalium fuscis; area radiali 4 venulis internis, ultima cellula divisa; sectore radii 9 ramis; area cubitali interna medio biareolata, postcubitali basi biareolata, seu venulis gradatis instructa.

Ala posterior, area radiali 2 venulis internis; sectore radii 9-10 ramis; area postcubitali simplici.

Long. corp. ♂ 30 mm., al. ant. 27 mm.; al. post. 24 mm.

Patria. Yerington, Nev., VII. 5, Lyon Co., alt. 5,000 feet. P. P. Baumberger (Col. m.).

13. *Neleon* gen. nov.

Antennæ clava manifesta, insertione haud proximæ, distantes plus latitudine primi articuli.

Prothorax transversus.

Abdomen cercis haud exertis.

Calcaria primo articulo tarsorum breviora aut vix longiora.

Alæ plerumque angustæ, acutæ cellulis plerisque rectangularibus; linea plicata pone sectorem radii haud distincta; area costali angusta, simplici, apicali lata, serie venularum gradatarum instructa; area radiali pluribus venulis internis.

Ala anterior area apicali duplici serie venularum gradatarum; ramo accessorio seu linea plicata pone cubitum illique parallelo indicata.

Cetera ut in *Myrmeleone* L. restr.

As type of this new genus I select the species *M. immaculatus*

De G., from the United States (not *M. occidentalis* Currie). Under the same genus I place *M. pictifrons* Gerst. from Australia, *M. crudelis* Walk. from North America, and others.

Family HEMEROBIIDÆ.

14. *Hemerobius humuli* L. White Plains, Mosholu, N. Y.; Westfield, N. J.
15. *Micromus posticus* Walk. White Plains, Staten Island, Forest Park, Brooklyn, N. Y.
16. *Psectra diptera* Burm. White Plains.

Family CHRYSOPIDÆ.

17. *Chrysopa nigricornis* Burm. Forest Park, Waban.
18. *Chrysopa harrisii* Fitch. Van Cortlandt Park.
19. *Chrysopa chi.* Fitch. Forest Park, Westfield, Mosholu, Waban.

Family PSOCIDÆ.

20. *Psocus striatus* Walk. Mosholu, Sept. 13, White Plains.
21. *Psocus variabilis* Aaron. White Plains, July 9, August 13, 1910.
22. *Polypsocus abruptus* Hagen. Mosholu, Oct. 18, 1902. I prefer the name *abruptus* to the *corruptus*, as usually printed.
23. *Peripsocus alboguttatus* Dalm. White Plains, Aug. 15, 1909. It is entirely like the examples from Europe. I have not seen the record of this species from the United States.
24. *Peripsocus subpupillatus* MacLachl. White Plains, July 4, 1909. Also, I think, the first record from the United States.

March 11, 1915.

THE SWEET SINGERS OF PALLAS ATHENE.

BY R. P. Dow, Brooklyn, N. Y.

"Even upon the spear of Athene, with her beautiful helmet, you may see me, Tettix, seated, for as much as we are beloved by the Muses so much do we love Pallas, the virgin, who first gave a prize for melody."

If the buzzing of the bee was music to the Greek of old, who loved beauty of sound no less than beauty of form, most glorious